

---

# Audiodesign

Speaker 2go



Bedienungsanleitung, Operating instructions, Mode d'emploi,  
Istruzioni per l'uso, Instrucciones de manejo, Gebruiksaanwijzing,  
Betjeningsvejledning, Käyttöohje, Bruksanvisning

---

**LOEWE.**



|                        |        |
|------------------------|--------|
| ■ Speaker 2go          | - 17 - |
| Operating instructions |        |
| Table of contents      |        |
|                        |        |

|  |           |
|--|-----------|
| <b>WELCOME!</b>  | <b>18</b> |
| Delivery specification                                 | 18        |
| About this instruction manual                          | 18        |
| Performance  | 18        |
| <b>For your safety</b>                                 | <b>19</b> |
| <b>Control elements</b>                                | <b>21</b> |
| <b>Start-up</b>  | <b>22</b> |
| Charging the built-in battery                          | 22        |
| Switching on   | 22        |
| Switching off  | 22        |
| <b>Cable connection</b>                                | <b>23</b> |
| Connecting the audio source via an audio cable         | 23        |
| Charging the audio source                              | 23        |
| <b>Bluetooth link</b>                                  | <b>24</b> |
| Linking the audio source via Bluetooth                 | 24        |
| Linking the audio source via Connectivity Easy Pairing | 25        |
| <b>Audio playback</b>                                  | <b>26</b> |
| <b>Handsfree function</b>                              | <b>27</b> |
| <b>Table Stand Flex</b>                                | <b>27</b> |
| <b>Technical data</b>                                  | <b>28</b> |
| <b>Legal details</b>                                   | <b>28</b> |
| <b>Environmental protection</b>                        | <b>29</b> |
| <b>Battery</b>   | <b>30</b> |
| <b>Legal information</b>                               | <b>30</b> |
| <b>Conformity / Manufacturer's declaration</b>         | <b>30</b> |

|                        |        |
|------------------------|--------|
| Speaker 2go            | - 18 - |
| Operating instructions |        |
| WELCOME!               |        |
|                        |        |
|                        |        |

## Thank you

for choosing a Loewe product!

Loewe stands for the highest standards of technology, design and user friendliness. This applies equally for TV, video, audio and accessories. Neither technology nor design is an end in itself, but both are intended to provide our customers with the best possible audio and visual experience. Our design is not influenced by short-term, fashionable trends. You have, after all, purchased a high-quality piece of equipment that you do not want to be tired of tomorrow or the day after.

## Delivery specification

- Speaker 2go
- Power adaptor
- Audio cable, 3.5 mm jack
- Carrying bag
- This instruction manual

## About this instruction manual

The information in these instructions refer to the product **Loewe Speaker 2go** (part no. 52231xxx).

**i** For best results regarding safety and the longevity of the set, we recommend you read the chapter "**For your safety**" before switching it on for the first time (page 19).

## Performance

### Connection options

Bluetooth 2.1 + EDR

Connectivity Easy Pairing (for connection with NFC-enabled devices)

USB charging function for external devices

Socket for power adaptor

AUX IN stereo audio input 3.5mm jack

### Replay functions

Playing audio files (aptX, SBC)

Bluetooth handsfree equipment

**For your safety, and to avoid unnecessary damage to your unit, please read and follow the safety instructions below:**

### Intended use and ambient conditions

This device is intended exclusively for rendering audio signals. It must not be used in rooms with a high level of **humidity** (e.g. bathroom, sauna) or a high **dust concentration**. The manufacturer's warranty is only valid for use in the specified permissible environment.

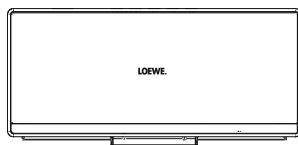
If the unit is used outdoors, make sure that it is protected from **moisture** (rain, dripping water and splashing water or dew). High humidity and dust concentrations lead to leakage currents in the device. This can result in a shock hazard by touching it or even fire.

If you have moved the unit out of the **cold** into a warm environment, leave it switched off for about an hour because of a possible formation of **condensation**.

Do not place **objects** containing **liquids** on top of the unit. Protect the device against dripping and splashing water.

**Candles** or **naked flames** must be kept away from the unit at all times to prevent it from catching fire.

Never place the device in a location where it is exposed to **vibrations**. This can lead to material overload.



### Power supply

**Incorrect voltages** can damage the unit. This device may only be connected to a power supply with the voltage and frequency indicated on the type plate using the supplied power adaptor. The **power adaptor** of the unit must be easily accessible so that the device can be disconnected from the mains at any time. When unplugging the power adaptor from the mains, pull at the adaptor body and not at the **cable**.

Lay the **connecting cable** so that it cannot be damaged. The connecting cable may not be kinked or laid over sharp edges, stood on or exposed to **chemicals**; the latter also applies to the unit as a whole. A power adaptor with damaged insulation can cause **electric shocks** and poses a **fire risk**.

### Supervision

Do not allow **children** to use the device without supervision or to play in the immediate vicinity of the device. The device could tip over, be pushed off or pulled down from the stand surface and injure someone. Do not allow the switched-on device to run **unattended**.

|                        |        |
|------------------------|--------|
| Speaker 2go            | - 20 - |
| Operating instructions |        |
| For your safety        |        |
|                        |        |

## Air circulation and high temperatures

Ensure that there is at least 3 cm free space on the sides and above the set for air circulation, if the set is placed in a **cabinet** or on a **shelf**.

Like any electronic device, your unit requires **air for cooling**. Obstruction of the air circulation can cause fires.

Prevent **metal items**, needles, paper clips, liquids, wax, or similar items, from getting into the interior of the device through the openings of the device covers. Such objects can cause **short circuits** in the unit, which could possibly cause a fire.

If something should get into the **interior of the set** then immediately unplug the mains plug of the device and contact the **field service** for more information.

## Set-up

Place the unit on an **even, firm, horizontal surface**. Particularly ensure that the set does not protrude to the front when placed in or on pieces of furniture.

Set up the device where it is not exposed to direct **sunlight** and where it is not exposed to additional heating by **radiators**.

## Volume

Loud music can lead to ear damage. Avoid extreme volume especially over long periods.

## Thunder storms

In the event of a thunderstorm, pull out the **mains plug** and all connected **cables** from the device. Overvoltage caused by **lightning strokes** can damage the device via the mains. The mains plug and all connected cables should also be pulled out during long periods of **absence**.

## Repairs and accessories

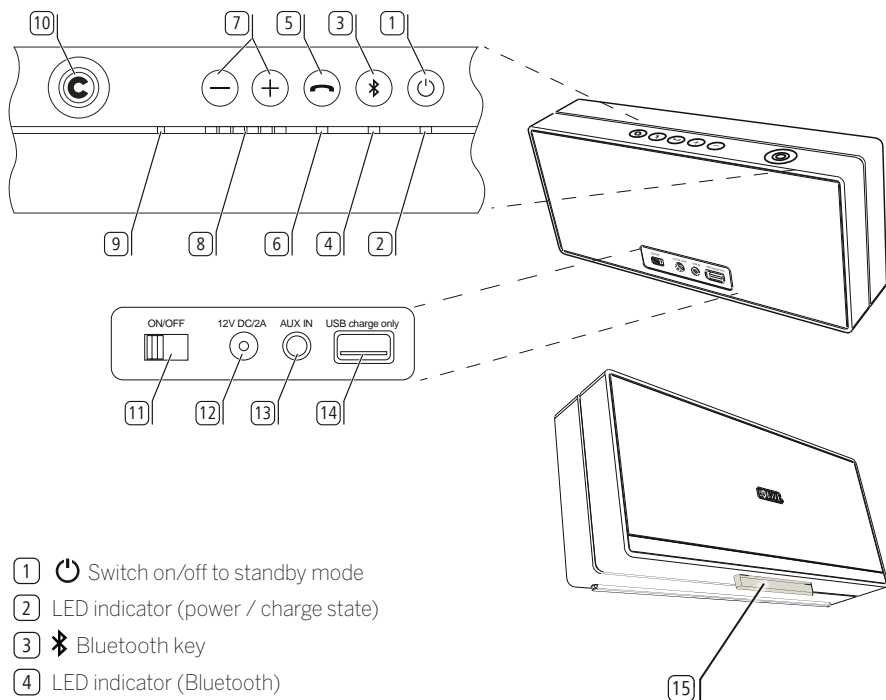


Warning: To rule out the danger of an electric shock, do not remove the cover. There are no parts inside the unit that can be repaired by the user. Have your device repaired or serviced by **authorised technicians** only. Only use **original accessories**, if possible.

## Cleaning and care

**i** Switch off the device with the main switch prior to cleaning.

Clean the device with a soft, moist, clean and colour-neutral cloth only, **without** any **aggressive** or **scouring cleaning agents**.

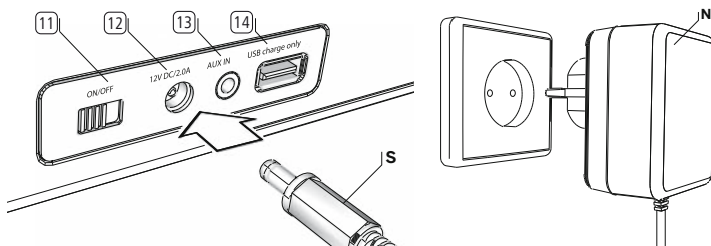


- 1 Switch on/off to standby mode
- 2 LED indicator (power / charge state)
- 3 Bluetooth key
- 4 LED indicator (Bluetooth)
- 5 Key for handsfree talking
- 6 LED indicator (handsfree talking)
- 7 Adjust the volume
- 8 LED indicator (volume/mute)
- 9 Microphone for handsfree talking
- 10 Connectivity Easy Pairing Antenna (for connection with NFC-enabled devices)
- 11 **ON/OFF** - Battery slide switch
- 12 **12V DC/2.0A** - Socket for power adaptor
- 13 **AUX IN** - Stereo audio input 3.5mm jack
- 14 **USB charge only** - USB socket for charging external audio sources
- 15 Table Stand Flex - Listening angle adjustable by latching

## Charging the built-in battery

The battery in the device is already installed ex factory. Before the first use, the battery must be charged for about 3 hrs. With a fully charged battery the Speaker 2go is operational for about 8 hrs.

Insert the plug **(S)** into the socket **(12)** at the rear side of the Speaker 2go. Then plug the power adaptor **(N)** into a 110-240V 50/60Hz mains socket.



The battery charge level is shown by the LED indicator **(2)**.

|                      |                                       |
|----------------------|---------------------------------------|
| LED pulsing red:     | Device standby, charging battery      |
| LED pulsing white:   | Device standby, battery fully charged |
| LED lights up white: | Device switched on                    |

## Switching on



Set the slide switch **(11)** to the **ON** position.



Turn on the Speaker 2go using the key **(1)**. The LED indicator **(2)** lights up. During battery operation the battery capacity level is shown by the LED.

|                                 |   |
|---------------------------------|---|
| Battery capacity more than 25%: | LED lights up white.                      |
| Battery capacity 11% to 25%:    | LED lights up red.                        |
| Battery capacity 5% to 10%:     | LED blinking red.                         |
| Battery capacity is below 5%:   | Speaker 2go switches off (safety buffer). |

## Switching off



Switch the Speaker 2go to the standby mode using the key **(1)**.

The LED indicator **(2)** goes off.

After 10 minutes without audio playback or key operation, the Speaker 2go automatically switches to standby mode.



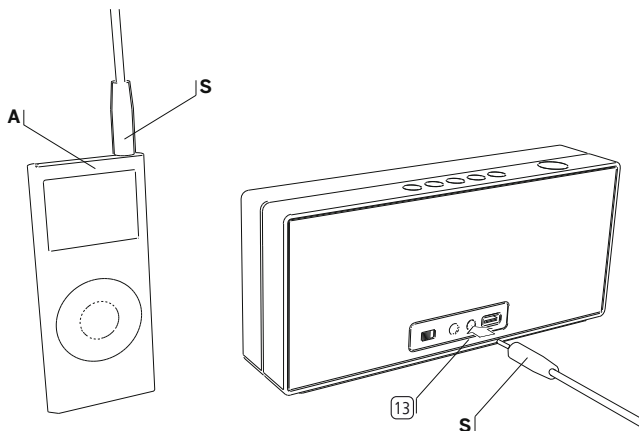
When the speaker is not used for a longer time and before a transport, set the sliding switch **(11)** to the **OFF** position.

|   |                        |        |
|---|------------------------|--------|
| ■ | Speaker 2go            | - 23 - |
|   | Operating instructions |        |
|   | Cable connection       |        |
|   |                        |        |
|   |                        |        |

## Connecting the audio source via an audio cable

You can connect your Speaker 2go to your audio source, e.g. mobile phone, music player, etc., using an audio cable with 3.5mm jack plug (included in the set of equipment supplied).

Use the audio cable (**S**) with 3.5mm jack plug to connect the analogue stereo audio output of your audio source (**A**) with the **AUX IN** stereo audio input (13) of the Speaker 2go.



The audio signal (page 26) is now replayed via the audio cable.

## Charging the audio source

You may charge the battery of your audio source, e.g. a mobile phone, via your Speaker 2go. To do so, use an USB cable with type A jack plug (available from your dealer) suitable for your audio source.



Insert the type A plug of the USB cable into the USB socket (14) **USB charge only** of the Speaker 2go.

With power adapter, charging will take place independent on setting of sliding switch (11). Without power adapter, charging function is only activated with sliding switch (11) at **ON** position.

**I** If the battery capacity of the Speaker 2go is below 25%, external devices will no longer be charged.

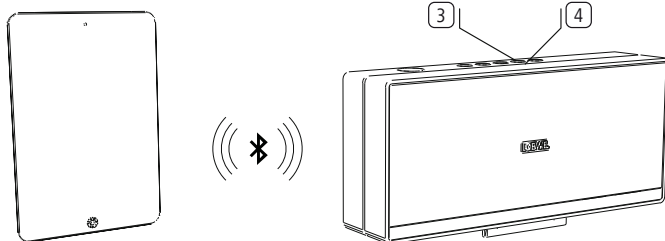
## Linking the audio source via Bluetooth

You can link your Speaker 2go to an audio source, e.g. smartphone, tablet PC, etc. using a wireless Bluetooth connection. The audio sources must support the Bluetooth **A2DP** protocol.

- i** The distance between your Speaker 2go and the audio source must be no more than 10m (line of sight).
- i** Up to 5 audio sources can be memorized by the Speaker 2go via Bluetooth. However, only one active connection is possible at a time.



**Press** the key **(3)** on the Speaker 2go **for a long period** (approx. 3 sec).  
You hear a signal tone. The LED indicator **(4)** (Bluetooth) will flash.



Enable the **Bluetooth function** of your audio source. If necessary, get help from the instruction manual of your audio source.

If necessary, confirm the Bluetooth **Search** function of the audio source.

Now, Bluetooth devices will be searched near the audio source.

Select **Speaker 2go**.

If a code is requested, enter **0000**.

After the linking is completed you hear a signal tone. The LED indicator **(4)** lights up permanently; the Speaker 2go is now ready for audio playback (page 26).

- i** For some audio sources, the link must be explicitly enabled before music playback can be heard from the Speaker 2go.



When switching the speaker 2go to standby using the **(1)** key, the audio source will be delinked.

After switching the Speaker 2go on again using the **(1)** key, the Speaker 2go tries to link to the audio source. In this situation the LED (Bluetooth) **(4)** pulses. After successful linking the LED **(4)** will light up permanently.

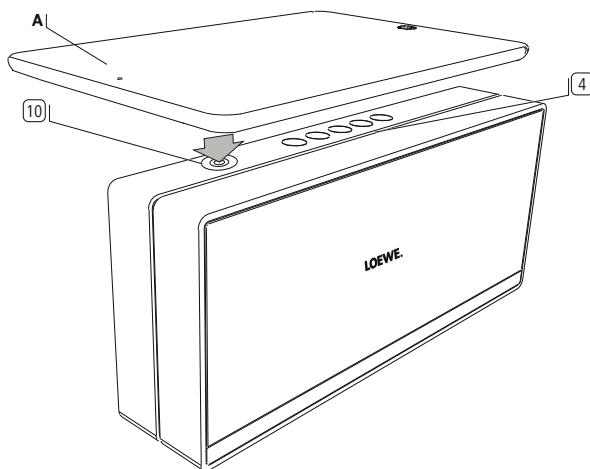
## Linking the audio source via Connectivity Easy Pairing

It is very simple to link your Speaker 2go to your audio source, e.g. smartphone, tablet PC, etc., when using the **Connectivity Easy Pairing function** (linking with NFC-enabled devices). For this purpose, the audio source must support the **NFC function**.



Enable the **NFC function** and the **Bluetooth function** of your audio source. If necessary, get help from the instruction manual of your audio source.

Hold your audio source (**A**) in the direction of the Connectivity Easy Pairing antenna **10** of the Speaker 2go.



If necessary, confirm the request of your audio source for linking to the Speaker 2go.

After the linking is completed you hear a signal tone. The LED indicator **4** (Bluetooth) lights up permanently.

Now, the Speaker 2go is linked to your audio source via Bluetooth and is ready for audio playback (page 26).

**i** For some audio sources, the link must be explicitly enabled before music playback can be heard from the Speaker 2go.

|   |                        |        |
|---|------------------------|--------|
| ■ | Speaker 2go            | - 26 - |
|   | Operating instructions |        |
|   | Audio playback         |        |
|   |                        |        |
|   |                        |        |

## Audio playback

**i** The Speaker 2go must be linked via Bluetooth (page 24) or Connectivity Easy Pairing (page 25) or connected via audio cable (page 23) to your audio source and turned on (page 22).

**i** For playback, the following sequence applies: Handsfree operation prior to Bluetooth audio playback prior to wired playback. This means that playback of audio content via the audio cable is only possible when audio content is neither played back from a device linked via Bluetooth nor via the integrated handsfree equipment.



Start the audio playback on your audio source.

**i** When using an audio cable connection (page 23) adjust the volume of your audio source to a high level and select the desired volume on the Speaker 2go to avoid interfering noise.



Adjust the volume on the Speaker 2go with the **+/-** keys **7**. The volume can be adjusted in 24 steps which are represented visually by six LEDs of the LED indicator **8** (volume).

Pressing briefly the **+/-** key **7** increases or decreases the volume by one step. When keeping the **+** or **-** key pressed you traverse the whole volume range. The maximum volume is indicated by two flashes of all six LEDs with full brightness.

**i** Loud music can lead to ear damage. Avoid extreme volume especially over long periods.



Mute the Speaker 2go by pressing the **+** and **-** keys **7** simultaneously. All six LEDs of the LED indicator **8** (volume) flash with full brightness, all other LEDs are dimmed. By pressing the **+** or **-** key **7** the muting is cancelled. The LED indicator shows the original volume again.

|   |                        |        |
|---|------------------------|--------|
| ■ | Speaker 2go            | - 27 - |
|   | Operating instructions |        |
|   | Handsfree function     |        |
|   | Table Stand Flex       |        |

## Handsfree function

- i** The Speaker 2go must be switched on and linked via Bluetooth (page 24) or Connectivity Easy Pairing (page 25) to your mobile phone.

In case of an incoming call, a ring tone sounds. The LED indicator **6** (handsfree talking) flashes. An audio playback will be paused in this case.



Answer the incoming call by pressing the key **5** on the speaker 2go or the corresponding key on your mobile phone.

The LED indicator **6** lights up (handsfree talking).

When speaking turn your face to the top **9** of the Speaker 2go.



Adjust the volume on the Speaker 2go with the **+/-** keys **7** (see also page 26).



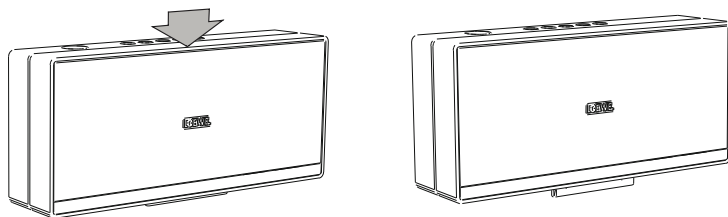
Finish the telephone conversation by pressing again the key **5** on the Speaker 2go or the corresponding key on your mobile phone.

- i** Loud ambient noise impairs the quality of the handsfree function. Make sure there is a quiet environment or abstain from using the handsfree function if there is no proper environment.

- i** To achieve a high level of intelligibility between callers, speak only alternately. The distance between the caller and the Speaker 2go should be between 0.3m and 1.2m.

## Table Stand Flex

The Table Stand Flex **13** allows you to change the pitch of Speaker 2go and thus the angle of audio beam. For adapting the pitch, press the central top of Speaker 2go.



- i** Adapting the pitch works on solid, plain surfaces only.

|                        |        |
|------------------------|--------|
| ■ Speaker 2go          | - 28 - |
| Operating instructions |        |
| Technical data         |        |
|                        |        |

## Technical data

|                               |  |
|-------------------------------|--|
| Speaker 2go                   | part no. 52231xxx  |
| Operating temperature         | 5 °C ... 40 °C   |
| Humidity                      | 30 % ... 85 % (no condensation)  |
| Dimensions (approximate)      | 240 x 105 x 51 mm (W x H x D)  |
| Weight                        | 1.3 kg   |
| Mains voltage                 | 110 - 240V, 50/60Hz  |
| Max. power consumption        | 24 W   |
| Standby power consumption     | < = 0.5 W  |
| Built-in rechargeable battery | Li-polymer, 2 x 1250mAh, 7.4V  |
| 12V DC/2.0A                   | Socket for supplied power adaptor  |
| USB                           | 2.0, type A, charging function, 500mA  |
| AUX IN                        | 3.5mm jack, 1.0Vrms, 10k Ohm   |
| Fitting                       | 2 full-range speakers, 1 bass reflex speaker                                     |
| Transmission range            | 80Hz to 20kHz  |
| Output power (music/sine):    | 40W overall (2x10W + 20W) /<br>20W overall (2x5W + 10W)                          |
| Wireless transmission         | Bluetooth 2.4GHz, 10m transmission range<br>NFC                                  |
| Bluetooth protocols           | A2DP, 2.1+EDR, AVRCP 1.4, HS,<br>HFP 1.6 (Wideband Speech),<br>aptX decoder, AEC |

## Legal details

Loewe Technologies GmbH  
Industriestraße 11  
D-96317 Kronach

Editorial date 12/15-3.1 TB  
© Loewe Technologies GmbH, Kronach

All rights including translation, technical modifications and errors reserved.

## Environmental protection

### Cardboard box and packaging

In line with national regulations regarding the disposal of packaging materials, we pay a fee to authorised recyclers who collect packaging from dealers. Nevertheless, we recommend that you keep the original cardboard box and the rest of the packaging materials so that the device can, if necessary, be transported under the safest possible conditions.

### The device

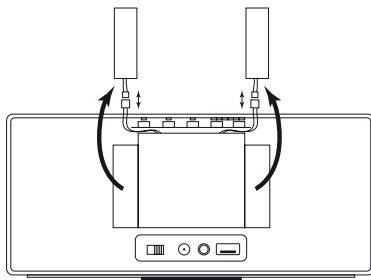
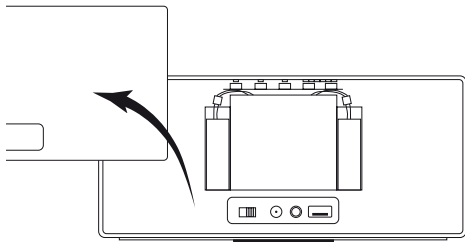


**Attention:** The EU Directive 2002/96/EC governs the proper return, handling and recycling of used electronic appliances. Old electronic devices must therefore be disposed of separately. Never dispose of this device in normal domestic waste! You can hand in your old unit free of charge at identified collection points or to your dealer if you buy a similar new unit.

Other details about return (also for non-EU countries) are available from your local authorities.

Before disposing of the device, please remove the two built-in batteries and dispose of them separately.

To open the device, use a pointed object with which you lever out the grille on the rear panel, remove the two batteries and disconnect the cables.



### Batteries



The built-in battery does not contain any pollutants such as cadmium, lead, or mercury.

In accordance with the Battery Directive, used batteries should no longer be disposed of in the domestic waste. You can dispose of used batteries free of charge at the collection points in retail outlets. Your dealer will also have a collection point for used batteries.

|                        |        |
|------------------------|--------|
| ■ Speaker 2go          | - 30 - |
| Operating instructions |        |
| Battery                |        |
| Legal information      |        |

## Battery

The rechargeable batteries are consumables and therefore not covered by the warranty. Customers are **not** allowed to replace defective rechargeable batteries. In case of a defective rechargeable battery please contact your dealer.

**CAUTION:** Danger of explosion if Li-polymer battery is incorrectly replaced (reverse polarity / short circuit). Replace rechargeable battery only with the same or equivalent type.

## Legal information

"© 2012 CSR plc and its group companies.

The aptX® mark and the aptX logo are trade marks of CSR plc or one of its group companies and may be registered in one or more jurisdictions."



## Conformity / Manufacturer's declaration



Loewe Technologies hereby declares that this product meets the essential requirements and other relevant provisions of Directive 1999/5/EC and all applicable EU directives.

You can find the complete declaration of conformity in the product selection at:

**[www.loewe.tv/int/my-loewe](http://www.loewe.tv/int/my-loewe)**

**(AUS)**

Qualifi Pty Ltd  
24 Lionel Road  
Mt.Waverley VIC 3149 Australia  
Tel +61-03-8542 1111  
Fax +61-03-9543 3677  
E-mail: info@qualifi.com.au

**(B NL L)**

Loewe Opta Benelux NV/SA  
Uilenbaan 84  
2160 Wommelgem, België  
Tel +32 - 3 - 2 70 99 30  
Fax +32 - 3 - 2 71 01 08  
E-mail: ccc@loewe.be

**(CH)**

Telion AG  
Rütistrasse 26  
8952 Schlieren, Schweiz  
Tel +41 - 44 732 15 11  
Fax +41 - 44 732 15 02  
E-mail: infoKD@telion.ch

**(CN)**

Guangdong MG Audio Development  
Co.Ltd  
No.8 Jinghu Rd. Xinhua St. Huadu  
Reg. GZ, PRC  
Tel +86-(0)20-22675666  
Fax +86-(0)20-22675777  
E-mail: service@loewe-mg.com

Xiamen Tenote Investment Co. Ltd  
26F 3# Xinglin Bay Operation Center,  
No.478 xinglinwan Avenue,  
Jimei District, Xiamen, Fujian, PRC  
Tel +86-400 088 1566  
E-mail: service@loewe-tnt.com

**(CY)**

Hadjikyriakos & Sons Ltd.  
121 Prodomos Str., P.O Box 21587  
1511 Nicosia, Cyprus  
Tel +357 - 22 87 21 11  
Fax +357 - 22 66 33 91  
E-mail: savvas@hadjikyriakos.com.cy

**(CZ)**

BaSys CS s.r.o.  
Sodomkova 1478/8  
10200 Praha 10 - Hostivar,  
**Česká republika**  
Tel +420 234 706 700  
Fax +420 234 706 701  
E-mail: office@basys.cz

**(D A)**

Loewe Technologies GmbH,  
Customer Care Center  
Industriestraße 11  
96317 Kronach, Deutschland  
Tel +49 9261 99-500  
Fax +49 9261 99-515  
E-mail: ccc@loewe.de

**(DK)**

EET Europarts  
Loewe Denmark  
Bregnerødvej 133 D  
3460 Birkerød, Denmark  
Tel +45 - 82 19 19  
E-mail: info@eeteuroparts.dk

**(E)**

Gaplasa S.A.  
Conde de Torroja, 25  
28022 Madrid, España  
Tel +34 - 917 48 29 60  
Fax +34 - 913 29 16 75  
E-mail: loewe@maygap.com

**(F)**

Loewe France SAS  
Rue du Dépôt,  
13 Parc de l'Europe, BP 10010  
67014 Strasbourg Cédex, France  
Tel +33 - 3 - 88 79 72 50  
Fax +33 - 3 - 88 79 72 59  
E-mail: loewe.france@loewe-fr.com

**(FIN)**

EET Europarts  
Loewe Finland  
Metsäneidonkuja 12  
02130 Espoo, Finland  
Tel +358 9 47 850 900  
www.eeteuroparts.fi

**(GB IRL)**

Loewe UK Limited  
1st Floor, 237A Kensington High St  
London  
W8 6SA, UK  
Tel +44 - (0) 207 368 1100  
Fax +44 - (0) 207 368 1101  
E-mail: enquiries@loewe-uk.com

**(GR RO AL)**

Issagogiki Emboriki Ellados S.A.  
321 Mesogion Av.  
152 31 Chalandri-Athens, Hellas  
Tel +30 - 210 672 12 00  
Fax +30 - 210 674 02 04  
E-mail: christina\_argyropoulou@  
isembel.gr

**(HR)**

Plug&Play Ltd.  
Bednjanska 8, 10000 Zagreb  
Hrvatska (Kroatia)  
Tel +385 1 4929 683  
Fax +385 1 4929 682  
E-mail: info@loewe.hr

**(I)**

Loewe Italiana S.r.L.  
Via Monte Baldo, 14/P - 14/N  
37069 Dossobuono di Villafranca di  
Verona  
Tel +39 - 045 82 51 690  
Fax +39 - 045 82 51 622  
E-mail: info@loewe.it

**(IL)**

Clear electronic entertainment Ltd  
13 Noah Mozes St.  
Agish Ravad Building  
Tel Aviv 67442, Israel  
Tel +972 - 3 - 6091100  
Fax +972 - 3 - 6092200  
E-mail: info@loewe.co.il

**(IND)**

Nonplus Ultra Home Automation Pvt Ltd  
First Floor, No. 615, Second Main Road  
Indiranagar Stage I, Indiranagar  
Bangalore 560038  
India  
Tel +91 80 41114599  
E-mail: jimmy@nplusultra.in

**(IR)**

Pars Royal Taramesh  
LOEWE Gallery  
#3 Shariati St. Opp. Soheil St.  
P.O Box 1914965537  
Tehran, Iran  
Tel + 98 21-22391661  
E-Mail: info@tarameshgroup.com

**(JOR)**

ACCUTECH Solutions Co.  
1-Kharija Al-Ashja'i Street  
Jabal Al-Weibdeh  
P.O.Box 9668 Amman 11191, Jordan  
Tel: +962-6-465-9985  
Fax: +962-6-465-0119  
E-Mail: info@accutech-solutions.net

**(KSA)**

LOEWE Show Room  
Olaya Street, Near Kingdom Center  
RIYADH, SAUDI ARABIA  
P.O Box 92831 Riyadh 11663  
Tel +966-11-4640927  
Fax +966-11-4640759  
E-mail: hkkurkjian@gmail.com

**(LV) (EST)**

Kpartners, SIA  
A.Čaka iela 80  
Rīga, LV-1011, Latvia  
Tel +3 71 - 67 29 29 59  
Fax +3 71 - 67 31 05 68  
E-mail: evgenii.bebnev@loewe.lv

**(LT)**

A Cappella Ltd.  
Ausros Vartu 5, Pasazo skg.  
01129 Vilnius, Lithuania  
Tel +370 - 52 12 22 96  
Fax +370 - 52 62 66 81  
E-mail: info@loewe.lt

**(N)**

EET Europarts AS  
Olaf Helsetsvet 6 (Vekstsenteret)  
0694 Oslo, Norge  
Tel +47 - 22919500  
E-mail: salg@eeteuroparts.no

**(P)**

Gaplasa S.A.  
Rua Professor Henrique de Barros  
Edifício Sagres, 2º. C  
2685-338 Prior Velho, Portugal  
Tel +351 - 21 942 78 30  
Fax +351 - 21 940 00 78  
E-mail: geral.loewe@mayro.pt

**(PL)**

3LOGIC Sp.z o.o.  
ul. Zakopiańska 153  
30-435 Kraków  
Tel +48 - 12 640 20 00  
Fax +48 - 12 640 20 01  
www.3logic.pl

**(RI)**

V2 Indonesia  
5th Intiland tower  
Jl. Jenderal Sudirman 32  
Jakarta 10220, INDONESIA  
Tel +62-21 57853547  
E-mail: service@v2indonesia.com

**(RL)**

I Control SAL  
Gemmaizeh, Rmeil.  
Building 328 1st Floor Beirut, Lebanon  
Tel +961 1 446777 / 1 587446  
Fax +961 1 582446  
E-mail: info@icontrol-leb.com

**(RUS)**

Service Center Loewe  
Aptekarsky per.4 podjezd 5A  
105005 Moscow, Russia  
Tel +7 - 499 940 42 32 ( ext. 454 )  
Fax +7 - 495 730 78 01  
E-mail: service@loewe-cis.ru

**(S)**

EET Europarts AB  
Loewe Sweden  
Box 4124  
SE-131 04, Nacka, Sverige  
Tel +46 - 8 507 510 00  
E-mail: Kundenservice@eeteuroparts.se

**(SGP)**

Atlas Care Centre  
11 changi south street 3  
#03-01 builders centre  
Singapore 486122  
Tel +65 - 6745 2028  
Fax +65 - 6546 7861  
E-mail: service@atlas-sv.com

**(TR)**

ENKAY GROUP  
SERVISPLUS MUSTERI HIZMETLERI  
Alermdag Cad. Site Yolu No:18  
Umraniye, Istanbul, TÜRKİYE  
Tel 444 4 784  
E-mail: info@servisplus.com.tr

**(ZA)**

Volco Enterprise Close Corporation  
Unit 8  
7 on Mastiff (Road)  
Longlake Ext 1, Lingbro Business Park  
2165 Johannesburg  
Tel +27 11 608 1228  
Fax +27 11 608 1740  
E-mail: v63@mweb.co.za



35244002

